



42 MARINER POINT - WEST TOWER Brighton Road |  
Sherborn, MA 01912





## 42 MARINER POINT - WEST TOWER Brighton Road | | Shoreham-By-Sea

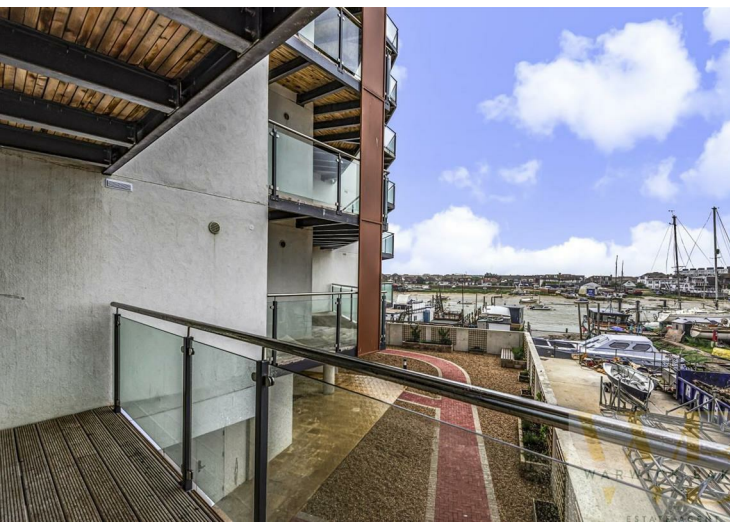
£259,000

PHASE 3 - WEST TOWER - VIEWS OF SHOREHAM, THE RIVER AND FOOTBRIDGE

HITCHING TIE 667SQ FT - 1 BEDROOM - FIRST FLOOR - WESTERLY ASPECT

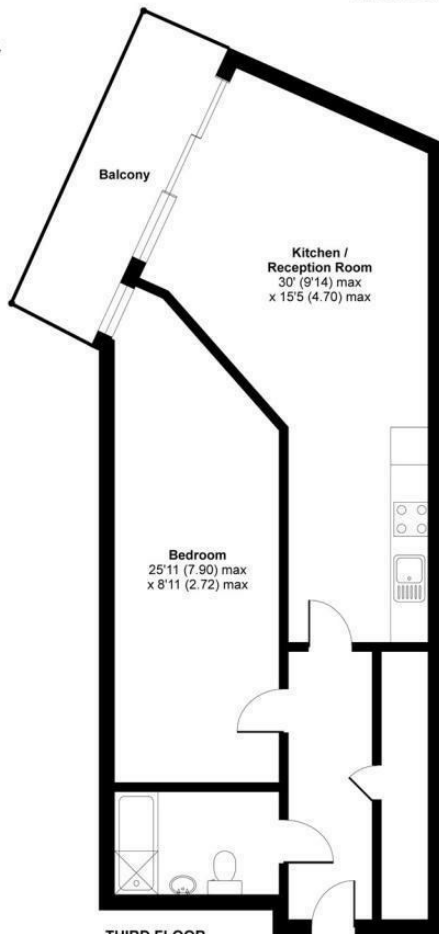
RIVER FRONT DEVELOPMENT WITH STUNNING VIEWS - CALL NOW FOR MORE DETAILS 01273 461144

- LUXURY NEW BUILD APARTMENT
- DIRECT RIVER VIEWS
- MODERN CONTEMPORARY FINISH
- 10 YEAR GUARANTEE
- BALCONY
- CLOSE TO MAINLINE RAILWAY STATION
- AUDIO ENTRY SYSTEM
- LIFT TO ALL FLOORS
- AVAILABLE NIOW
- 01273 461144



### Brighton Road, Shoreham-by-Sea, BN43

Approximate Area = 685 sq ft / 63.6 sq m  
For identification only - Not to scale



Floor plan produced in accordance with RICS Property Measurement Standards incorporating International Property Measurement Standards (IPMS2 Residential). © richscem 2021. Produced for Middleton and Co Estates Limited. REF: 782920

#### Disclaimer

\* These particulars are intended to give a fair and substantially correct overall description for the guidance of intending purchasers and do not constitute an offer or part of a contract. Prospective purchasers and/or lessees ought to seek their own independent professional advice.

\* All descriptions, dimensions, areas, references to condition and necessary permissions for use and occupation and other details are given in good faith and are believed to be correct, but any intending purchasers should not rely on them as statements or representations of fact, but must satisfy themselves by inspection or otherwise as to the correctness of each of them.

\* All measurements are approximate



Energy Efficiency Rating	
Current	Potential
Very energy efficient - lower running costs	
(92 plus) <b>A</b>	
(81-91) <b>B</b>	
(69-80) <b>C</b>	
(55-68) <b>D</b>	
(39-54) <b>E</b>	
(21-38) <b>F</b>	
(1-20) <b>G</b>	
Not energy efficient - higher running costs	
England & Wales	
EU Directive 2002/91/EC	

Environmental Impact (CO <sub>2</sub> ) Rating	
Current	Potential
Very environmentally friendly - lower CO <sub>2</sub> emissions	
(92 plus) <b>A</b>	
(81-91) <b>B</b>	
(69-80) <b>C</b>	
(55-68) <b>D</b>	
(39-54) <b>E</b>	
(21-38) <b>F</b>	
(1-20) <b>G</b>	
Not environmentally friendly - higher CO <sub>2</sub> emissions	
England & Wales	
EU Directive 2002/91/EC	